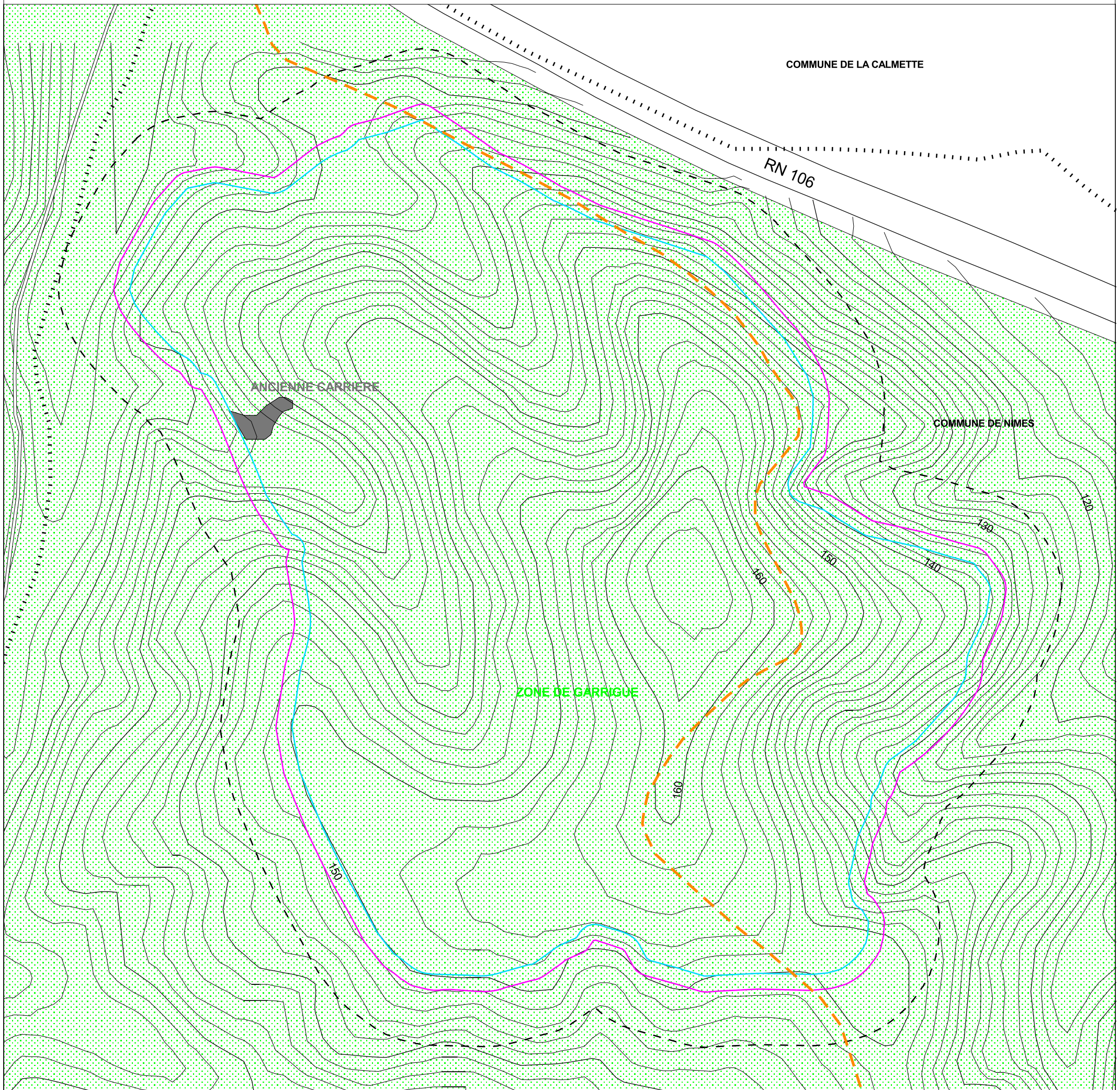


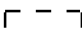


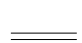



PLAN D'ENSEMBLE AU 1/2500



-  Emprise de la zone d'extraction (181 893,93 m²)
-  Emprise de la demande (200 435,58)
-  Périmètre de 35 m
-  Construction
-  Limite de commune
-  Chemin du Mas de Vallongue (Domaine public de la commune de Nîmes)
-  Piste DFCI B1

1:2500

0 25 50 Mètres

